

An ACE curiosity?

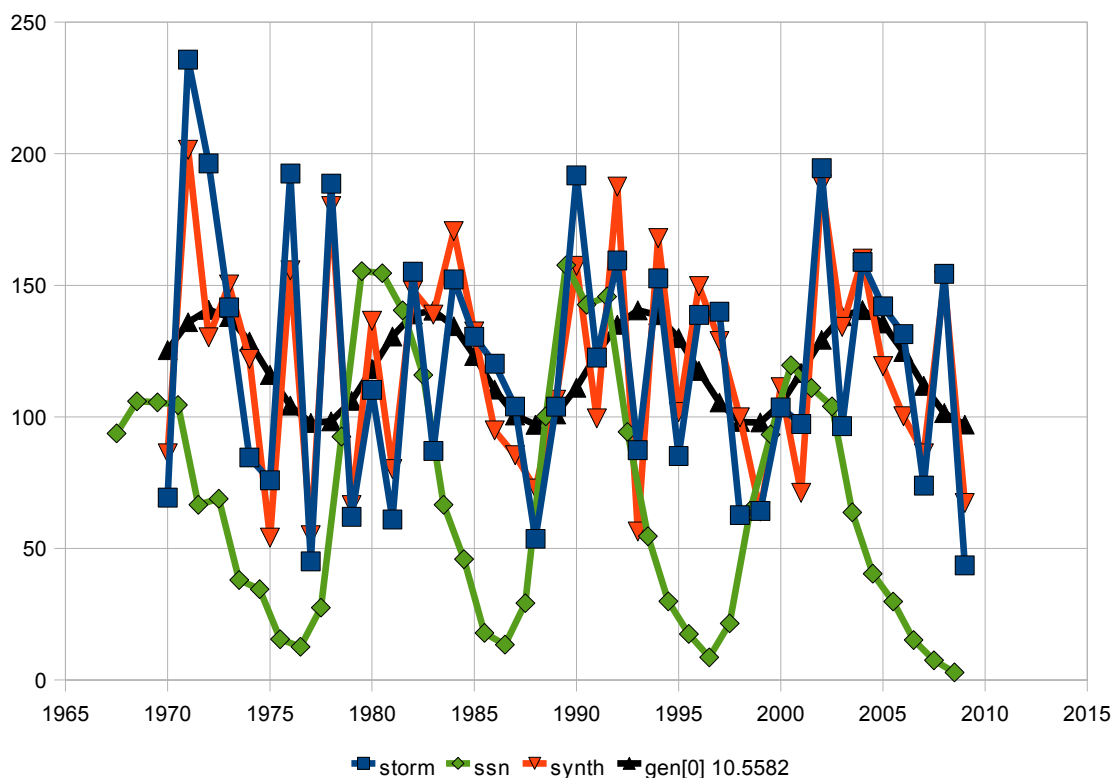
Out of my curiosity I took the dataset linked from

<http://wattsupwiththat.com/2009/07/29/employment-slump-at-nhc/>

unsorted it into year order and fed it into the jaws of some software here, wondering what it would do.

Shock. I thought it was just noise, nothing would happen but when a possible correlation appears, notice. This was not intended to be an accurate decomposition, literally done for an idle joke.

Tropical Cyclone ACE
Simulation and 10 year component



I didn't do that, software driven by the data did. The 10 year item is a major component it needs to make the same shape.

Hunch, pulled up the annual sunspot number from a SIDC file and plot that too.

How curious.

If there is a connection, keep in mind that the solar connection is not the visually obvious sunspot, since sunspots are just an incidental to other solar activity. No-one understands all the connections, such as magnetic, short wavelength ionospheric interactions and more.

Tim
Newbury. UK.